



ip.buffer App Note
AN011 : Nortel TM and the
ip.buffer



<i>Date</i>	<i>Author</i>	<i>Release</i>
2009-08-03	MP	Initial draft
05/08/09	MP	Added screen shots of TM and extra information.

© UK 2009 Scannex Electronics Limited. All rights reserved worldwide.

Scannex Electronics Ltd, UK
t: +44(0)1273 715460
f: +44(0)1273 715469

<http://www.scannex.co.uk>
info@scannex.co.uk

Scannex LLC, USA
t: 1-866-4BUFFER
(1-866-428-3337)

<http://www.scannex.com>
info@scannex.com

Table of Contents

1.Introduction.....	1
1.1.Disable the DBA access.....	1
2.Network Connection.....	2
2.1.ip.buffer setup for Network Connection.....	2
2.2.Nortel TM setup for Network Connection.....	3
3.Modem Connection.....	4
3.1.ip.buffer setup for Modem Connection.....	4
3.1.1.Loading emulation.....	4
3.1.2.Setting up delivery.....	5
3.2.Nortel TM setup for Modem Connection.....	6
4.Configuring TM for Traffic.....	7
4.1.Administer the PBX.....	7
4.1.1.Enable CDR and Traffic for the TTY port.....	7
4.1.2.Disable DBA access.....	7
4.2.Setup a Traffic Analysis job.....	8

1. Introduction

Nortel's Telephony Manager (TM) has collection scripts that were designed to work with older buffer units. With the setup information provided in this guide, the ip.buffer can be used instead of these older units.

1.1. *Disable the DBA access*

Before continuing the configuration process for the ip.buffer you should terminate any running DBA processes for the site under TM.

Simultaneous access of both DBA and the ip.buffer could cause data loss and unpredictable results!

2. Network Connection

One batch driven method of collection uses the FTP standard protocol. The ip.buffer is well suited to this collection method, and this will provide the fastest collection.

2.1. *ip.buffer setup for Network Connection*

Configure the destination for the channel this way:

- Destination Mode: **FTP Server**
- Username: **CHANNEL1**
 - You can use any username, but it must be all in CAPITAL letters since TM capitalises anything you enter in its setup screens.
- Password: **PASSWORD**
 - Again, make this all capital letters to match TM's settings
- Filename: **PNLAST**
 - Again, make this all capital letters. The default filename for TM is "PNLAST".
- Compression: **None**
- Limit: **0kb**
 - You may want to provide a limit, e.g. 1024kb, to limit the connection transfer. However, if the ip.buffer has more than the limit then you will have to run another batch collection from within TM.
- Autodelete: **Delete after download**
 - TM does not explicitly request a delete of the data when it has collected it. Setting to "Delete after download" is essential - once TM has collected data, the ip.buffer will delete what was collected.

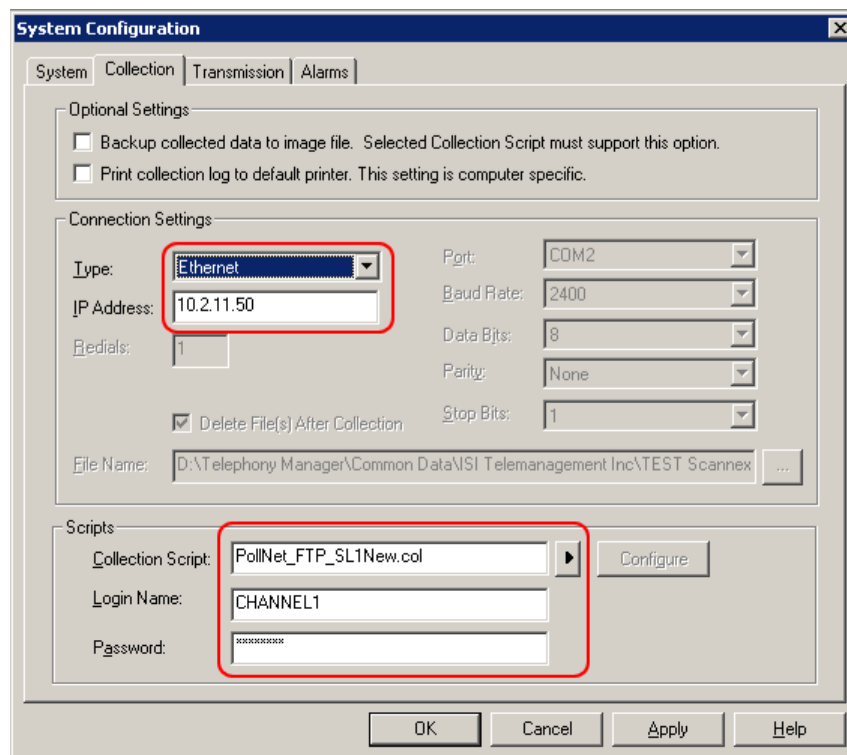
Save these settings, and then proceed to setup the TM side.

2.2. Nortel TM setup for Network Connection

Within the System Configuration dialog for the site:

- Connection Settings:
 - Type: **Ethernet**
 - IP Address: **10.2.11.50** (or the actual address of the ip.buffer)
 - If you want to use a filename that is different to the default of “PNLAST” then enter this after the address, e.g. **10.2.11.50:FILE1**
However, make sure that the filename corresponds to the filename in the ip.buffer!
- Scripts:
 - Collection Script: **PollNet_FTP_SL1New.col**
 - Login Name: **CHANNEL1**
 - Password: **PASSWORD**

Having saved these values, Nortel TM should now be able to batch collect from the ip.buffer and convert the incoming data into CDR records.



3. Modem Connection

The ip.buffer can also emulate the WTI NetLink products, thereby allowing modem connection from Nortel TM. Although you can use this across a network, it is advisable to use the FTP method when you have direct connection to the buffer.

- One timed test showed FTP collecting 82k in 5 seconds, whereas the “Control B” NetLink method took around 4 minutes for the same data!

3.1. *ip.buffer setup for Modem Connection*

3.1.1. Loading emulation

First of all, you will need to download the “NetLink Emulation” script for the ip.buffer.

- Visit: <http://www.scannex.com/scripts>
- Download the appropriate ZIP file.
- Once downloaded, unzip the file (the .lua file will be uploaded to the ip.buffer)

Using SEDiscover, or just the browser, go to the SETUP page of the ip.buffer:

- Click on “Configuration, Scripts, Upgrade...” under the section “Advanced”
- If you have no other scripts running in the ip.buffer (such as for 911 detection, number masking, etc):
 - Click Script “Upload”
 - Click on the “Browse” button and point your browser to the .lua file you just downloaded
 - Then click “Save”
- If you have other scripts running:
 - Click Script “Edit”
 - You will have to manually copy-and-paste the NetLink emulation script so that the other script and NetLink script exist in the same Lua file. (If you have many ip.buffers to setup you could create a custom Lua file that combines both NetLink and the custom scripts you need).
 - Once combined, click “Save”
- The ip.buffer will ask you if you want to reboot the Lua engine - click on the “Now” link

3.1.2. Setting up delivery

Once the NetLink emulation is installed and running in the ip.buffer you can configure the destination:

- Destination Mode: **Legacy Emulation**
- Port: **2001**
- Interface: **LAN, Modem (PPP & Legacy)**
 - Do NOT select Modem Only (PPP)!
 - Allow: **blank**
 - If you want to stop access from across the Ethernet network, then enter “127.0.0.1” in the Allow field. Then only dial-in modem access will work.
 - TLS/SSL: **No encryption**
 - Client Type: **Auto**

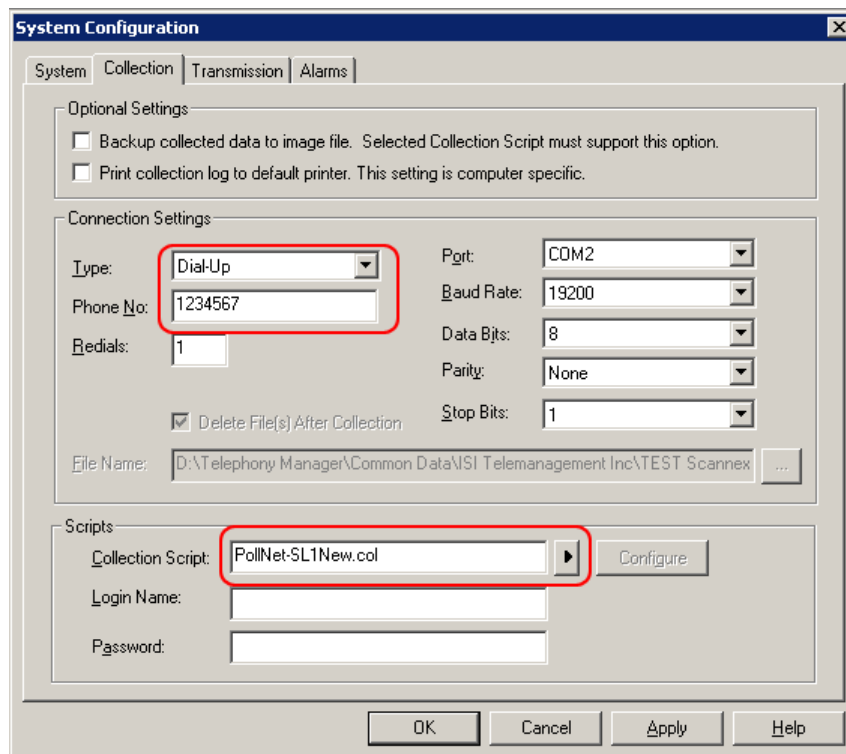
Save these settings, and then proceed to setup the TM side.

3.2. **Nortel TM setup for Modem Connection**

Within the System Configuration dialog for the site:

- Connection Settings:
 - Setup as you would for a NetLink device:
 - Type: **Dial-Up**
 - Phone No: *Enter the appropriate number*
 - Port: *Choose the COM port of the modem*
 - Baud Rate: *choose an appropriate baud rate for the modem*
- Scripts:
 - Collection Script: **PollNet_SL1New.col**
 - Login Name: (blank)
 - Password: (blank)

Having saved these values, Nortel TM should now be able to batch collect from the ip.buffer and convert the incoming data into CDR records.



4. Configuring TM for Traffic

If TM was configured to collect using the “DBA” method (i.e. direct to the PBX across the network with no buffering), then you will also need to make the following adjustments for traffic to work.

4.1. Administer the PBX

4.1.1. Enable CDR and Traffic for the TTY port

In the PBX administration, ensure that traffic data is sent via the same TTY port as the CDR data (obviously the ip.buffer can only deliver what it collected!)

- Administer the PBX:
 - Use Overlay Program “LD 17” to access Configuration Record 1
 - Change the Configuration Record (CHG CFN)
 - Change the TTY port settings, e.g. TTY2
 - ADAN CHG TTY 2
 - Enable traffic and CDR with USER CTY and TRF
 - (See pages 482, 484, 571-2 of the LD 17 section)

4.1.2. Disable DBA access

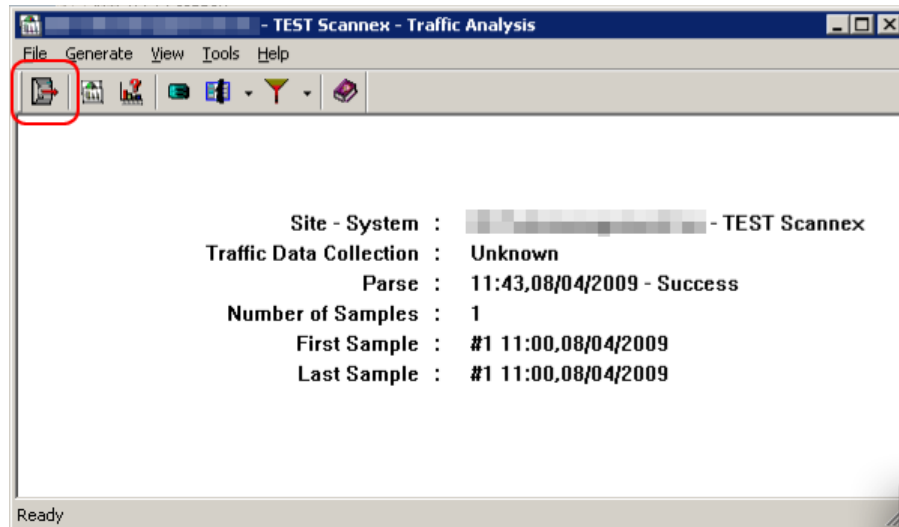
As a precaution, to prevent an attempted simultaneous access of DBA while the ip.buffer is collecting traffic data from the PBX, make the following administration changes:

- Administer the PBX:
 - Use Overlay Program “LD 15” to access Customer Data Block
 - Use the CDR Gateway and:
 - Change BDI to “NO” to disable the “Buffer Data Interface”
 - (See pages 264, 273 of the LD 15 section)

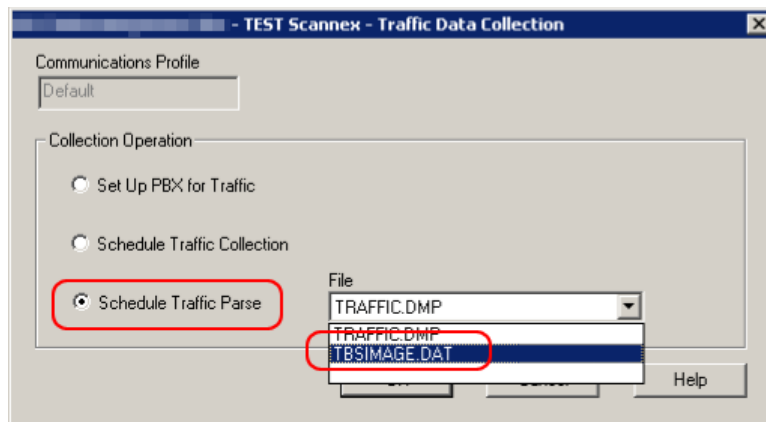
4.2. Setup a Traffic Analysis job

In the TM Traffic Analysis module:

- Under “File / Traffic Data Collection” (or click the icon highlighted)



- This will create a new job for processing traffic information.
- Select Schedule Traffic Parse, and choose “TBSIMAGE.DAT”.



- (The DBA module saves the traffic data in the TRAFFIC.DMP file, whereas the buffer collection scripts save in TBSIMAGE.DAT)

- When you OK the Traffic Data Collection dialog you can then enter the job information (you can enter the values that are appropriate to your needs):

The screenshot shows a 'Scheduling' dialog box with the following details:

- Job Section:**
 - Name: Traffic Parse
 - Description: Read traffic from ip.buffer
- Run Section:**
 - Radio buttons: Once, Hourly, **Daily**, Weekdays, Weekly, Monthly, Month-end, Custom
 - Checkbox: Delete When Done (unchecked)
 - Button: Interval...
- Start at Section:**
 - Month: 8, Day: 5, Year: 2009
 - Hour: 9, Minute: 14
 - Radio buttons: am, pm
 - Checkbox: Late execution (checked)
- Buttons:** OK, Cancel, Help

- After clicking OK on the Scheduling dialog the new traffic processing job will be on the queue.
- Remember to disable or delete the previous traffic analysis job (the one that processed the “traffic.dmp” file from the DBA utility)!